

For both brightfield and fluorescent scanning

Versatile model for both BF and FL capability
 Up to 30 2" x 3" (52 mm x 76 mm) slides or
 up to 60 1" x 3" (26 mm x 76 mm) slides

NanoZoomer® S60

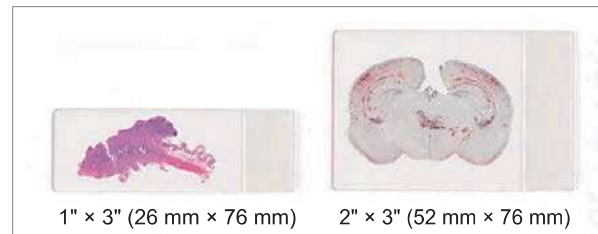
C13210



- Scanning speed (15 mm x 15 mm)
 - 20x mode: approx. 60 seconds
 - 40x mode: approx. 150 seconds
- Automatic scanning
 - Max. 60 slides

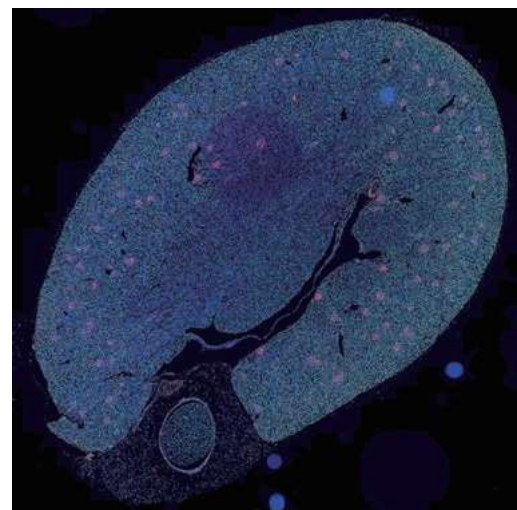
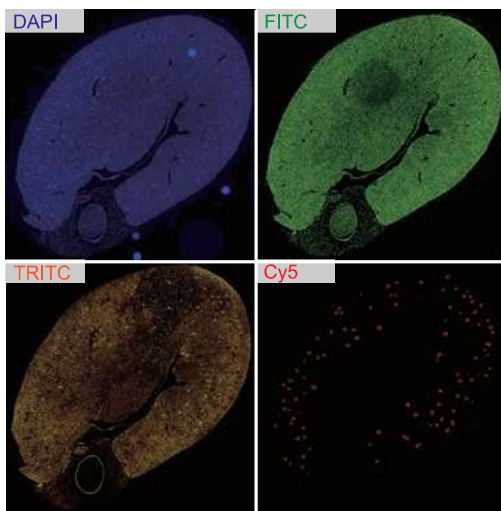
Compatible with 2" x 3" (52 mm x 76 mm) slides

By loading the dedicated cassette (option),
 2" x 3" (52 mm x 76 mm) slides can be scanned.
 Up to 3 cassettes can be loaded with combination of
 1" x 3" (26 mm x 76 mm) and 2" x 3" (52 mm x 76 mm).
 The maximum number of automatic scanned slides is
 60 for 1" x 3" (26 mm x 76 mm) slides only and
 30 for 2" x 3" (52 mm x 76 mm) slides only.



Compatible with fluorescent stained specimens

Enhances imaging capabilities with the addition of fluorescence module. Obtains superimposed bright-field, and fluorescent images using a camera dedicated to fluorescence.



Possible to superimpose

Option for fluorescence scanning

Fluorescence imaging module for S60 L13820-011, -041	Type of sensor	CMOS sensor for scientific research use
	Number of filter cube positions	3
Filter wheel for S60 L13820-02, -05	Number of excitation filters	6 (Φ25 mm)
	Number of emission filters	6 (Φ32 mm)
Solid state illumination unit L13820-07 SOLA III V-nIR (Lumencor)	Light source	Solid-state illumination with long lifetime
5 mm LLG with PVC outer sleeve	Liquid light guide	Φ5, L=2.0 m