

Top tips for laboratory success: the **TipOne**[®] pipette tip system.

A SUCCESS STORY SINCE 1998



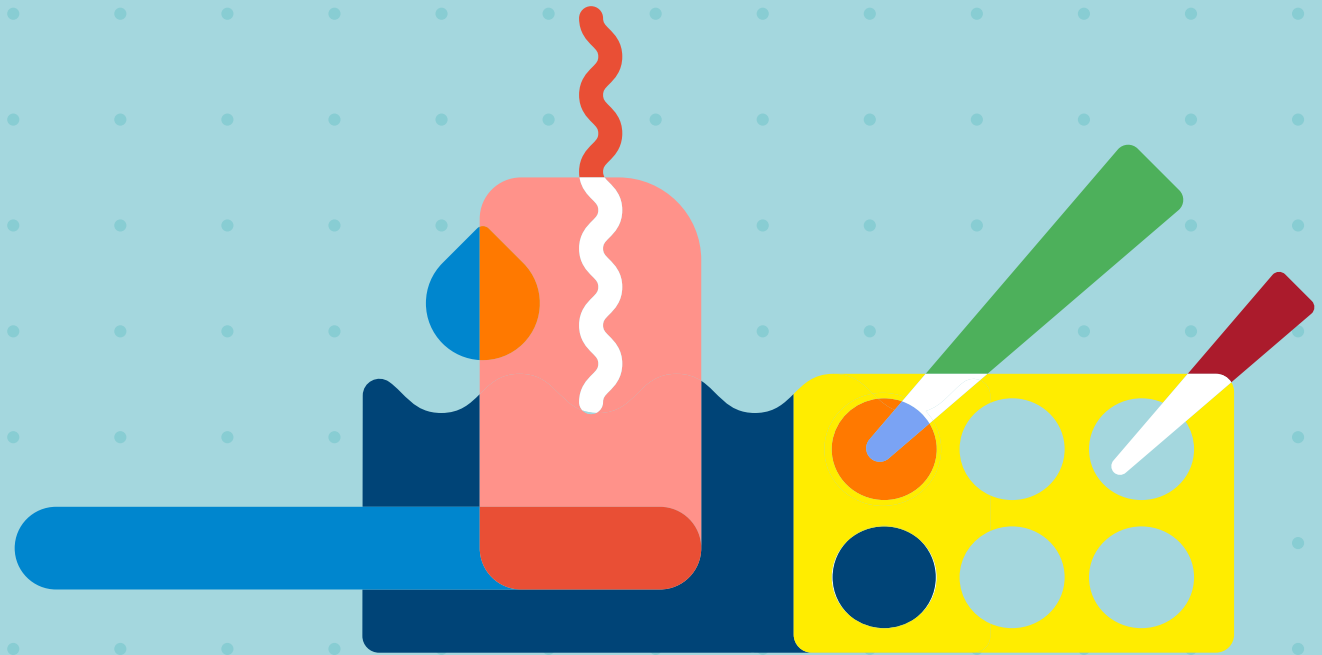
Passionate for science.



- **Product overview.**

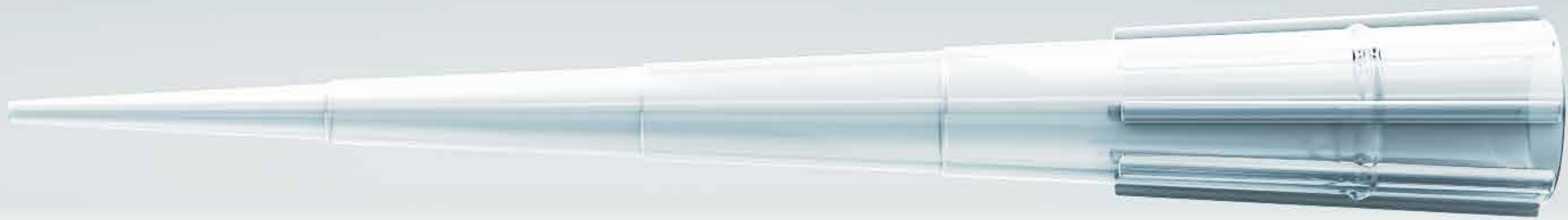
- Ordering information.

- Environmental care.



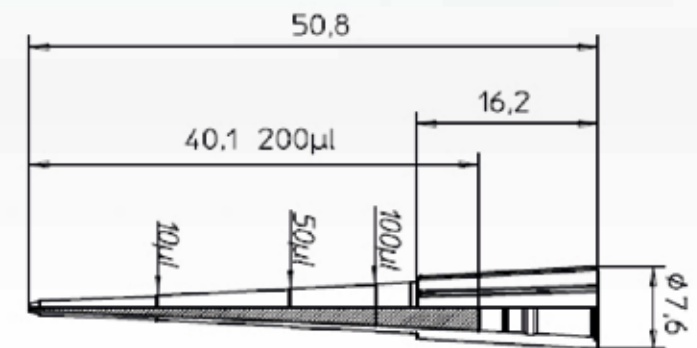
Product overview.

Why TipOne[®] pipette tips?



MORE COMPLICATED THAN YOU THINK

You might think of pipette tips as just small, inconspicuous items of plastic that are “all the same”. However, if you think producing a pipette tip is a simple matter, then you’re wrong! At Starlab, a lot of passion and expertise goes into our pipette tips. Why? Because the quality of the tip used is an essential factor in obtaining accurate results! Pipette tips are used for a variety of working steps, and inaccuracy at each step can accumulate to have a negative influence on your results. At Starlab, our aim is to minimize those inaccuracies through the design and expert manufacturing of TipOne[®], to give you more confidence in your results. That’s why the quality of a pipette tip is so important, and that’s why TipOne[®].



The final construction drawing documents the completed product design process. The slightest deviation from the normal value has a decisive influence on the tip fit. Starlab tips are produced with extreme precision and are tips that you can rely on.

TipOne® expertise and design.

LIQUID HANDLING EXPERTS

Starlab are liquid handling experts. We have many years experience in automated injection moulding processes for the manufacture of high quality laboratory consumables. With TipOne® we have developed one of the world's leading pipette tip systems.

PRODUCT DESIGN

What should the optimum tip look like? Its appearance is not about beauty, but rather the optimal shape, the length and color of the tip, the right material, and the correct wall thickness. The tip must fit perfectly with your pipette. Not only that, the tip must withstand very high mechanical stresses, and even autoclaving. All of this comes down to the design and the expertise of the manufacturer.

UNIVERSAL TIP FIT

One tip fits all! The tip collar of TipOne® tips is engineered to fit all popular pipettes without any loss of accuracy or precision.



THE LATEST TECHNOLOGY

The use of multiple cavity tools for the injection moulding process guarantees high conformity within one batch. The automated moulding and assembling procedures are carried out under clean-room conditions to eliminate contamination.

- Coaxial, very straight tips
- Extremely smooth and homogeneous surfaces
- Tip cone engineered to fit all popular pipettes
- Certified RNase, DNase, DNA and Pyrogen free
- Autoclavable*

* non-filter tips only



TipOne® production & quality.



WE WON'T TOLERATE INTOLERANCE

Conformity is especially crucial when performing serial examinations needing reproducible results. Pipette tips must meet two main criteria: an exact shape and absolute purity. Imagine, you are using a pipette series consisting of 96-tip racks, but the tip geometry and the fit is different from tip to tip. Starlab not only guarantees the lowest manufacturing tolerances between different batches, we can pledge this within the same batch too.

Sterile TipOne® tips are validated according to EN ISO 11137-2:2007. All TipOne® tips are certified RNase, DNase, DNA and pyrogen free. Each of these parameters is monitored at set intervals by an independent testing institute. In addition to this, internal quality control checks are carried out to check the tip geometry, and to ensure that the correct packaging is being carried out safely.

Certificate of Assurance

Product Number	S1120-9710	Lot Number	I1264543P
Product Description	TipOne FT 300µl Grad FTR ST	Date of Issue	May 5, 2020

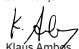
Starlab certifies that the following product is produced in a fully controlled environment that is designed to be free from detectable RNase, DNase, DNA and Endotoxins. Selected samples of product from this production line have been thoroughly tested by a pre-radiation bioburden test for the absence of bacterial organisms and any detectable RNase, DNase and DNA contamination. The samples are also tested by the Kinetic-turbidimetric LAL test for Endotoxins to be certified non-pyrogenic.

TESTING RESULTS

RNase	testing method: RNA Digestion limits: < 1 x 10 ⁻⁹ Kunitz Units
DNase	testing method: DNA Digestion limits: < 1 x 10 ⁻⁶ Kunitz Units
Human DNA	testing method: Polymerase Chain Reaction limits: < 2 x 10 ⁻⁹ Kunitz Units
Endotoxin	testing method: Kinetic-turbidimetric LAL-Test (FDA Guidelines) limits: < 0.05 EU/ml

The concentration levels for RNase, DNase, DNA and Endotoxins are less than the above stated limits.

Certified by:


Klaus Ambros
CEO STARLAB International GmbH

Starlab International GmbH
Neuer Hötigbaum 38
22143 Hamburg, Germany
E-Mail: info@starlab.de
www.starlabgroup.com
Tel.: +49 (0)40 675 99 39 0
Fax: +49 (0)40 675 9939 20

Authorized Managing Director
Klaus Ambros

Registry Court
Amtsgericht (first instance court)
Hamburg
Register number: HRB 122020
VAT ID no. pursuant to
§ 27 a German
VAT Act DE 214 891 717

Passionate for science.



TipOne® is a system with a system!

ONE SYSTEM, ONE GREEN SOLUTION

TipOne® is designed to be an eco-friendly pipette tip system. It is reusable, refillable and recyclable. Every part of the system is interchangeable with the rest. The exceptional quality of our racks means they can be reused again and again with the refills, even if autoclaving, without loss of stability or shape.

TipOne® sterile and non-sterile refills require less raw materials to manufacture compared to racked tips, resulting in less consumption of resources, and lower CO₂ emissions during production and delivery. The compact designs also help save valuable storage space in your lab.

All components of the TipOne system, with the exception of the bag for loose tips (made from recyclable HDPE) are made from pure polypropylene (PP) for easy recycling, where no separation of materials is required.

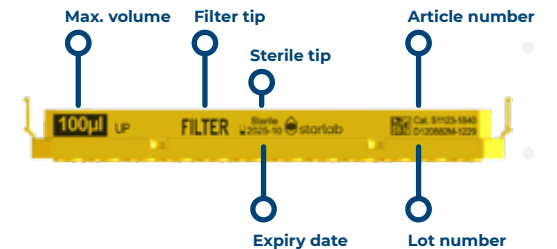
INTELLIGENT QUALITY

TipOne® tip wafers contain all the useful information you need to know on the tips that it holds.

A 2D matrix code on every wafer allows full traceability of item and lot number, which is ideal for labs using LIMS (Laboratory Information Management Systems). Our racks are designed to be refilled many times, so having this information on the wafer and not on a label on the rack avoids confusion or errors when racks are refilled.

Colour-coded wafers provide easy volume identification at a glance. The colour-coding mirrors the coding on our ErgoOne® pipettes.

Simplicity is key! The system comprises two racks only: a small rack for use with tip volumes 10 µl to 300 µl, and a large rack for use with tip volumes 1000 µl and 1250 µl.



The system: components overview.



The perfect rack.



KEY BENEFITS

- ☑ Lid opens at an optimised angle for unrestricted access
- ☑ Wafer locks securely into rack for stability during pipetting
- ☑ Stackable
- ☑ Reusable, autoclavable and recyclable

THE PERFECT PIPETTE TIP SYSTEM STARTS WITH THE PERFECT RACK

- Made from pure polypropylene for excellent stability and durability
- Optimised base geometry provides secure and precise handling
- Only two sizes in the system: small rack for tip volumes 10 µl to 300 µl and large rack for 1000 µl and 1250 µl tips
- Tip information is printed on the wafer, so you always know the volume and type of tips you are using, whether the tips were originally racked or the rack is being reused with a refill
- All components made of recyclable polypropylene

121°C



Autoclavable

Designed to be reused again and again, TipOne® racks can withstand at least 100 autoclave cycles while retaining stability, strength and shape. Autoclave with the lid closed to save space and reduce both the number of autoclave cycles and energy costs.



Ideal for multi-channels

Unrestricted multi-channel access is provided by the optimised opening angle of the lid and the design of the wafer. The rack's base geometry and centre of gravity provides stability and the sturdy wafer ensures a secure tip fit across all channels.



Stackable

The racks are designed to stack safely on top of one another to help save valuable lab space.



Reusable

Reuse the racks over and over again with the easy to use refill systems. This will reduce the amount of new plastic coming into your laboratory as well as minimise the amount of plastic for recycling.

THE CLEVER REFILL



KEY BENEFITS

- ✔ Space saving
- ✔ Autoclavable, once racked
- ✔ Eco-friendly
- ✔ Tip info printed on every wafer
- ✔ Recyclable



THE QUICK AND EASY WAY TO OBTAIN ECONOMICAL RACKED TIPS

- Supplied in two individually-wrapped stacks of five wafers
- Tip information printed on wafers can be seen easily without having to expose tips
- Spacers between the layers protect tips from contamination (10/20 µl, 300 µl & 1000 µl volumes only)
- Once racked, the refills can be autoclaved
- All components made of recyclable polypropylene

THE PLASTIC-SAVING STERILE REFILL



KEY BENEFITS

- ✔ Economical
- ✔ Quick and easy to load
- ✔ Sterility never compromised during racking
- ✔ Space saving and eco-friendly
- ✔ Recyclable



THE ECONOMICAL AND ECO-FRIENDLY ALTERNATIVE TO STERILE RACKED TIPS

- Individually wrapped
- Available for non-filter and filter tips
- Tip information printed on wafers can be seen easily without having to expose tips
- Top and bottom shells protect integrity of sterile product
- Space saving. Using sterile refills to reload racks directly during long periods in hoods and PCR workstations saves up to 20% precious space
- All components made of recyclable polypropylene

THE COMPACT STACK RACK



KEY BENEFITS

- ✓ Compact
- ✓ Stable design
- ✓ Convenient
- ✓ Autoclavable
- ✓ Recyclable



960 TIPS IN ONE CONVENIENT & COMPACT UNIT

- Wide base for great stability
- Excellent choice for multi-channel use
- Transparent lid protects tips when not in use
- Tip information printed on the wafers can be read easily through the transparent lid without having to expose the tips
- All components made from recyclable polypropylene



THE SELF-STANDING, RESEALABLE BAG



KEY BENEFITS

- ✓ Resealable
- ✓ Self-standing for easy access
- ✓ Recyclable



ECONOMICAL – IDEAL FOR TEACHING LABS OR NON-CRITICAL WORK

- Self-standing bag for easy and convenient access and storage
- Tamper-proof, easy-open perforation strip
- Resealable zip-lock bag for safe, contamination-free storage

The **perfect** pipetting partnership.

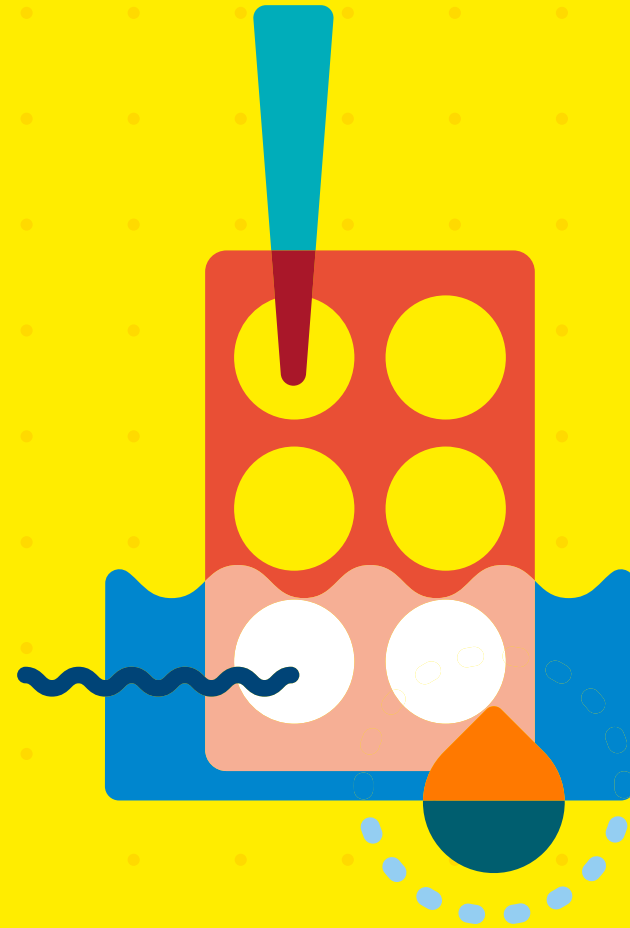


Scan QR code for more information & ordering



www.starlab.click/pipettes

- [Product overview.](#)
- **Ordering information.**
- [Environmental care.](#)



Ordering information.

TipOne® the trusted tip: pure, but not simple.



1 PURE QUALITY

TipOne® tips are manufactured from pure, virgin polypropylene to ensure the highest quality product.

2 ONE TIP FITS ALL

The flexible tip collar fits all popular pipettes, even those with worn tip holders! Thin-wall technology ensures a perfect seal while also reducing the loading and ejection forces.

3 EXCELLENT FILTER

The TipOne® filter is one of the best on the market and protects against aerosol cross-contamination without trapping your valuable samples. The filters contain no additives to interfere with samples.

4 CLEAR PRECISION

The latest injection moulding processes produce high precision, thin-walled tips with excellent clarity for better visibility of your samples.

5 BRILLIANT

Highly polished moulds for an extremely smooth surface to reduce sample retention.

6 ULTRAPOINT® ORIFICE

Prevents sample hang up and makes it easier to touch-off the last drop of sample.

Ordering information

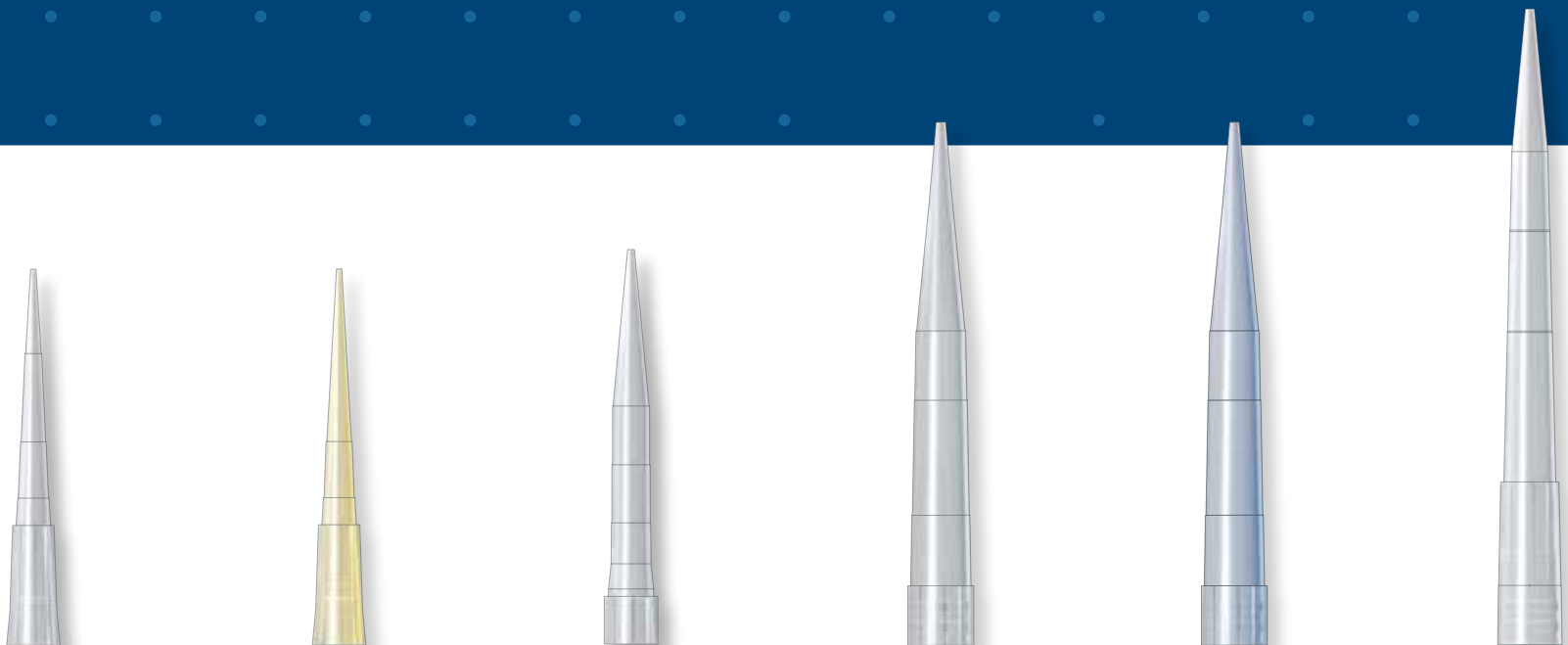
TipOne® non-sterile tips.



Description & Colour-coding	10 µl Graduated	10/20 µl XL Graduated	200 µl	200 µl Yellow	200 µl Bevelled	200 µl Yellow Bevelled
RACK 96-TIP RACK	S1111-3800 (960 Tips)	S1110-3800 (960 Tips)	S1111-0800 (960 Tips)	S1111-0806 (960 Tips)	S1111-1800 (960 Tips)	S1111-1806 (960 Tips)
	S1111-3800-C (8 x 960 Tips)	S1110-3800-C (8 x 960 Tips)	S1111-0800-C (8 x 960 Tips)	S1111-0806-C (8 x 960 Tips)	S1111-1800-C (8 x 960 Tips)	S1111-1806-C (8 x 960 Tips)
REFILL 96-TIP REFILL	S1111-3700 (960 Tips)	S1110-3700 (960 Tips)	S1111-0700 (960 Tips)	S1111-0706 (960 Tips)	S1111-1700 (960 Tips)	S1111-1706 (960 Tips)
	S1111-3700-C (10 x 960 Tips)	S1110-3700-C (10 x 960 Tips)	S1111-0700-C (10 x 960 Tips)	S1111-0706-C (10 x 960 Tips)	S1111-1700-C (10 x 960 Tips)	S1111-1706-C (10 x 960 Tips)
STACK RACK 960 TIP STACK	S1111-3200 (960 Tips)	N/A	S1111-0200 (960 Tips)	S1111-0206 (960 Tips)	S1111-1200 (960 Tips)	S1111-1206 (960 Tips)
	S1111-3200-C (10 x 960 Tips)	N/A	S1111-0200-C (10 x 960 Tips)	S1111-0206-C (10 x 960 Tips)	S1111-1200-C (10 x 960 Tips)	S1111-1206-C (10 x 960 Tips)
LOOSE 1000 TIP BAG	S1111-3000 (1000 Tips)	S1110-3000 (1000 Tips)	S1111-0000 (1000 Tips)	S1111-0006 (1000 Tips)	S1111-1000 (1000 Tips)	S1111-1006 (1000 Tips)
	S1111-3000-C (50 x 1000 Tips)	S1110-3000-C (50 x 1000 Tips)	S1111-0000-C (25 x 1000 Tips)	S1111-0006-C (25 x 1000 Tips)	S1111-1000-C (25 x 1000 Tips)	S1111-1006-C (25 x 1000 Tips)

Tips shown approx. actual size. N/A = not available. All tips certified RNase, DNase, DNA and Pyrogen free.

Ordering information
TipOne®
 non-sterile tips.






Description & Colour-coding	200 µl UltraPoint® Graduated	200 µl Yellow UltraPoint® Graduated	300 µl Graduated	1000 µl Graduated	1000 µl Blue Graduated	1250 µl XL Graduated
RACK 96-TIP RACK	S1113-1800 (960 Tips)	S1113-1806 (960 Tips)	S1110-9800 (960 Tips)	S1111-6800 (960 Tips)	S1111-6801 (960 Tips)	S1112-1820 (960 Tips)
	S1113-1800-C (8 x 960 Tips)	S1113-1806-C (8 x 960 Tips)	S1110-9800-C (8 x 960 Tips)	S1111-6800-C (4 x 960 Tips)	S1111-6801-C (4 x 960 Tips)	S1112-1820-C (4 x 960 Tips)
REFILL 96-TIP REFILL	S1113-1700 (960 Tips)	S1113-1706 (960 Tips)	S1110-9700 (960 Tips)	S1111-6700 (960 Tips)	S1111-6701 (960 Tips)	S1112-1720 (960 Tips)
	S1113-1700-C (10 x 960 Tips)	S1113-1706-C (10 x 960 Tips)	S1110-9700-C (10 x 960 Tips)	S1111-6700-C (10 x 960 Tips)	S1111-6701-C (10 x 960 Tips)	S1112-1720-C (10 x 960 Tips)
STACK RACK 960 TIP STACK	S1113-1200 (960 Tips)	S1113-1206 (960 Tips)	N/A	N/A	N/A	N/A
	S1113-1200-C (10 x 960 Tips)	S1113-1206-C (10 x 960 Tips)	N/A	N/A	N/A	N/A
LOOSE 1000 TIP BAG	S1113-1000 (1000 Tips)	S1113-1006 (1000 Tips)	S1110-9000 (1000 Tips)	S1111-6000 (1000 Tips)	S1111-6001 (1000 Tips)	S1112-1020 (1000 Tips)
	S1113-1000-C (25 x 1000 Tips)	S1113-1006-C (25 x 1000 Tips)	S1110-9000-C (25 x 1000 Tips)	S1111-6000-C (20 x 1000 Tips)	S1111-6001-C (20 x 1000 Tips)	S1112-1020-C (16 x 1000 Tips)

Tips shown approx. actual size. N/A = not available. All tips certified RNase, DNase, DNA and Pyrogen free.

Ordering information

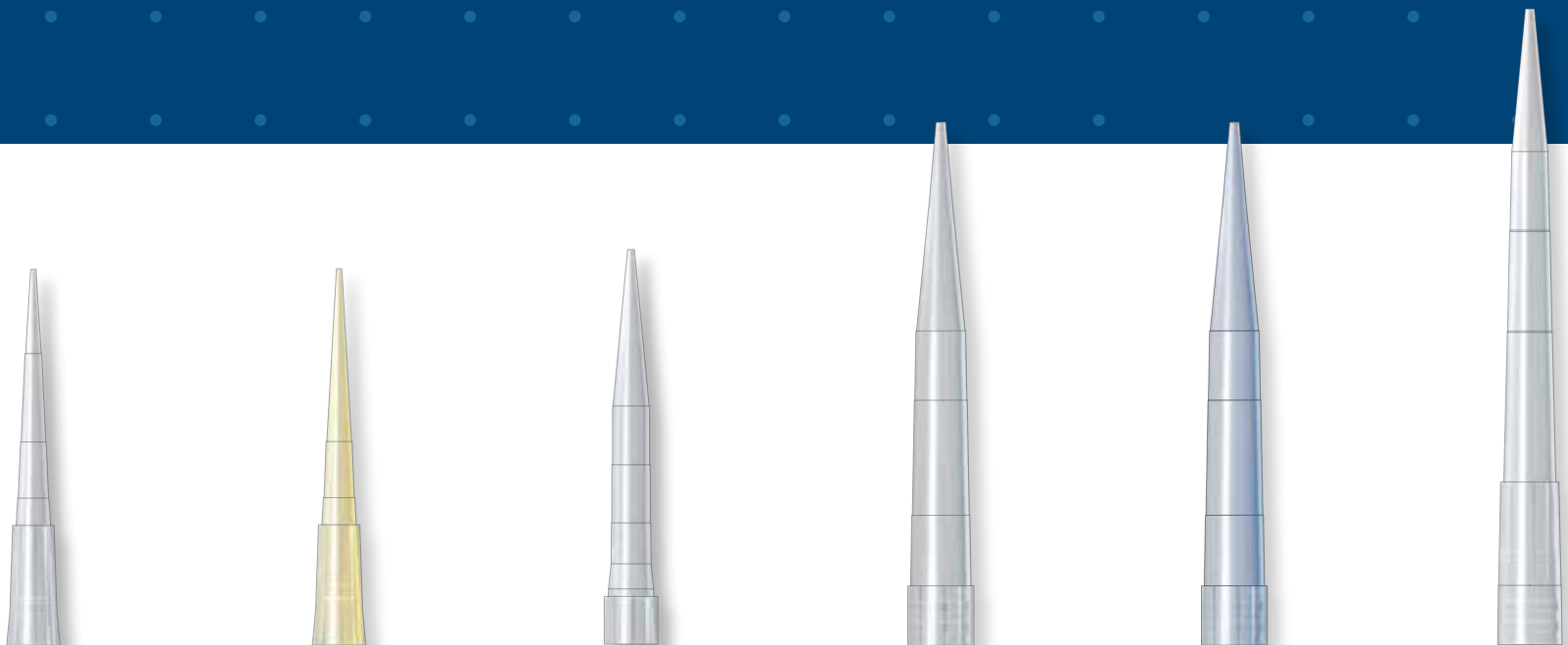
TipOne® sterile tips.






Description & Colour-coding	10 µl Graduated	10/20 µl XL Graduated	200 µl	200 µl Yellow	200 µl Bevelled	200 µl Yellow Bevelled
RACK 96-TIP RACK 	S1111-3810 (960 Tips)	S1110-3810 (960 Tips)	S1111-0810 (960 Tips)	S1111-0816 (960 Tips)	S1111-1810 (960 Tips)	S1111-1816 (960 Tips)
	S1111-3810-C (8 x 960 Tips)	S1110-3810-C (8 x 960 Tips)	S1111-0810-C (8 x 960 Tips)	S1111-0816-C (8 x 960 Tips)	S1111-1810-C (8 x 960 Tips)	S1111-1816-C (8 x 960 Tips)
NEW! REFILL 96-TIP REFILL 	N/A	S1110-3710 (960 Tips)	N/A	N/A	S1111-1710 (960 Tips)	S1111-1716 (960 Tips)
	N/A	S1110-3710-C (8 x 960 Tips)	N/A	N/A	S1111-1710-C (8 x 960 Tips)	S1111-1716-C (8 x 960 Tips)
STACK RACK 960 TIP STACK 	S1111-3210 (960 Tips)	N/A	S1111-0210 (960 Tips)	N/A	S1111-1210 (960 Tips)	N/A
	S1111-3210-C (10 x 960 Tips)	N/A	S1111-0210-C (10 x 960 Tips)	N/A	S1111-1210-C (10 x 960 Tips)	N/A

Tips shown approx. actual size. N/A = not available. All tips certified RNase, DNase, DNA and pyrogen free.

Ordering information
TipOne®
 sterile tips.



Description & Colour-coding	● 200 µl UltraPoint® Graduated	● 200 µl Yellow UltraPoint® Graduated	● 300 µl Graduated	● 1000 µl Graduated	● 1000 µl Blue Graduated	● 1250 µl XL Graduated
RACK 96-TIP RACK 	S1113-1810 (960 Tips)	S1113-1816 (960 Tips)	S1110-9810 (960 Tips)	S1111-6810 (960 Tips)	S1111-6811 (960 Tips)	S1112-1830 (960 Tips)
	S1113-1810-C (8 x 960 Tips)	S1113-1816-C (8 x 960 Tips)	S1110-9810-C (8 x 960 Tips)	S1111-8810-C (4 x 960 Tips)	S1111-6811-C (4 x 960 Tips)	S1112-1830-C (4 x 960 Tips)
NEW! REFILL 96-TIP REFILL 	S1113-1710 (960 Tips)	S1113-1716 (960 Tips)	N/A	N/A	N/A	S1112-1730 (960 Tips)
	S1113-1710-C (8 x 960 Tips)	S1113-1716-C (8 x 960 Tips)	N/A	N/A	N/A	S1112-1730-C (8 x 960 Tips)
STACK RACK 960 TIP STACK 	N/A	S1113-1216 (960 Tips)	N/A	N/A	N/A	N/A
	N/A	S1113-1216-C (10 x 960 Tips)	N/A	N/A	N/A	N/A

Tips shown approx. actual size. N/A = not available. All tips certified RNase, DNase, DNA and pyrogen free.

TipOne® sterile filter tips.



NOTHING GOES THROUGH!

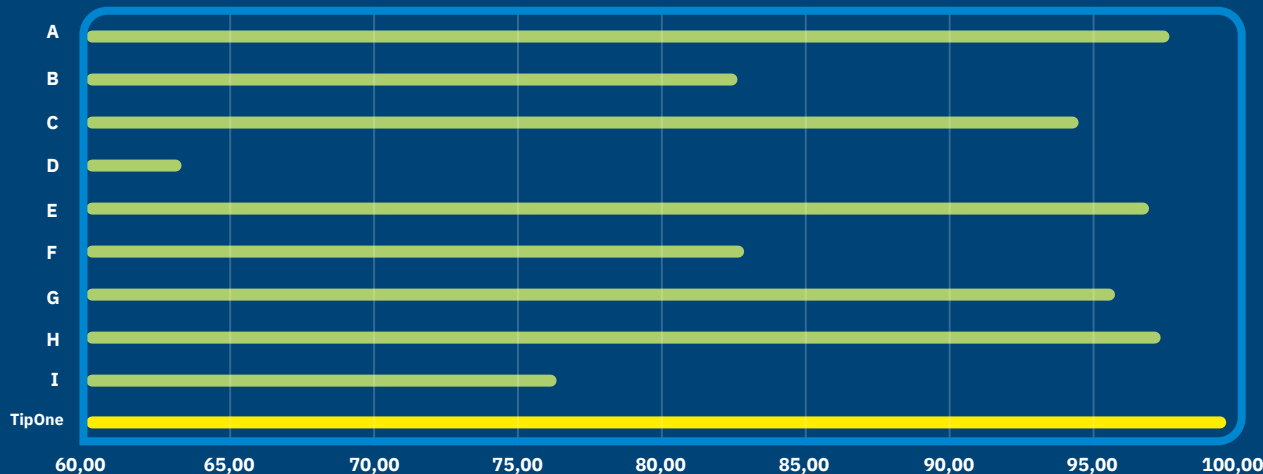
Protect your samples against unwanted contamination with TipOne® filter tips. When pipetting, it's not possible to see by eye if fine aerosols are going into your pipette which can go on to contaminate other samples at a later date.

The TipOne® filter protects against aerosol cross-contamination without trapping your valuable samples. The filters in TipOne® filter tips are one of the best filters available on the market. They are proven* to block >99% of aerosols.

FILTER TIP FEATURES

- Highly effective HDPE filter
- Filter contains no additives to interfere with your samples
- The filter will not absorb samples, allowing recovery if needed
- Sterile and RNase, DNase, DNA and Pyrogen free

Blocking of particles (diam. approx. 100 nm) [%]
TipOne® filter tips compared to other manufacturers' filter tips*




* The comparative tests were conducted in 2018 in an independent test institute with filter tips from other leading manufacturers.



Ordering information
TipOne®
 sterile filter tips.

NEW!



Description & Colour-coding	10 µl Graduated	10/20 µl XL Graduated	20 µl Bevelled	20 µl UltraPoint® Graduated	50 µl Bevelled	100 µl Bevelled	100 µl UltraPoint® Graduated	200 µl Graduated	200 µl UltraPoint® Graduated	300 µl Graduated	1000 µl	1000 µl XL Graduated
RACKED 96-TIP RACK 	S1121-3810 (960 Tips)	S1120-3810 (960 Tips)	S1120-1810 (960 Tips)	S1123-1810 (960 Tips)	S1120-2810 (960 Tips)	S1120-1840 (960 Tips)	S1123-1840 (960 Tips)	S1120-8810 (960 Tips)	S1123-8810 (960 Tips)	S1120-9810 (960 Tips)	S1126-7810 (960 Tips)	S1122-1830 (960 Tips)
	S1121-3810-C (8 x 960 Tips)	S1120-3810-C (8 x 960 Tips)	S1120-1810-C (8 x 960 Tips)	S1123-1810-C (8 x 960 Tips)	S1120-2810-C (8 x 960 Tips)	S1120-1840-C (8 x 960 Tips)	S1123-1840-C (8 x 960 Tips)	S1120-8810-C (8 x 960 Tips)	S1123-8810-C (8 x 960 Tips)	S1120-9810-C (8 x 960 Tips)	S1126-7810-C (4 x 960 Tips)	S1122-1830-C (4 x 960 Tips)
REFILL 96-TIP REFILL 	S1121-2710 (960 Tips)	S1120-3710 (960 Tips)	S1120-1710 (960 Tips)	S1123-1710 (960 Tips)	S1120-2710 (960 Tips)	S1120-1740 (960 Tips)	S1123-1740 (960 Tips)	S1120-8710 (960 Tips)	S1123-8710 (960 Tips)	S1120-9710 (960 Tips)	S1126-7710 (960 Tips)	S1122-1730 (960 Tips)
	S1121-2710-C (8 x 960 Tips)	S1120-3710-C (8 x 960 Tips)	S1120-1710-C (8 x 960 Tips)	S1123-1710-C (8 x 960 Tips)	S1120-2710-C (8 x 960 Tips)	S1120-1740-C (8 x 960 Tips)	S1123-1740-C (8 x 960 Tips)	S1120-8710-C (8 x 960 Tips)	S1123-8710-C (8 x 960 Tips)	S1120-9710-C (8 x 960 Tips)	S1126-7710-C (4 x 960 Tips)	S1122-1730-C (4 x 960 Tips)

Tips shown approx. actual size. All tips certified RNase, DNase, DNA and Pyrogen free.

- Product overview.
- Ordering information.
- **Environmental care.**



Environmental care.

Get green with Starlab.

PASSIONATE FOR SCIENCE PASSIONATE FOR SUSTAINABILITY IN SCIENCE

Starlab is committed to improving sustainability in science.

We will work on strategies to reduce the company's impact on the environment for both the products we manufacture and the daily running of the business.

We want to provide scientists with greener products so they can carry out their important work in increasingly, more sustainable ways.

So can plastic products be sustainable? Yes, if they are in a reduce, reuse, recycle, and reuse again cycle. Recyclable materials that can be repurposed again and again are less damaging to the environment.

It goes without saying that we want to manufacture as many of our products as possible from completely recyclable materials. And we have already succeeded. All components of the TipOne® system, with the exception of the bag for loose tips (made from recyclable HDPE) are made from pure polypropylene (PP) for easy recycling, where no separation of materials is required.

Visit our website to learn more about our green initiatives: www.starlab.click/green



TipOne® is the convincing eco-friendly tip system.

SAVING PLASTIC SINCE 1998

MADE WITH GREEN ENERGY

TipOne® tips are manufactured in a factory powered 100% by sustainable energy (wind).

PACKED IN RECYCLED CARDBOARD CARTONS

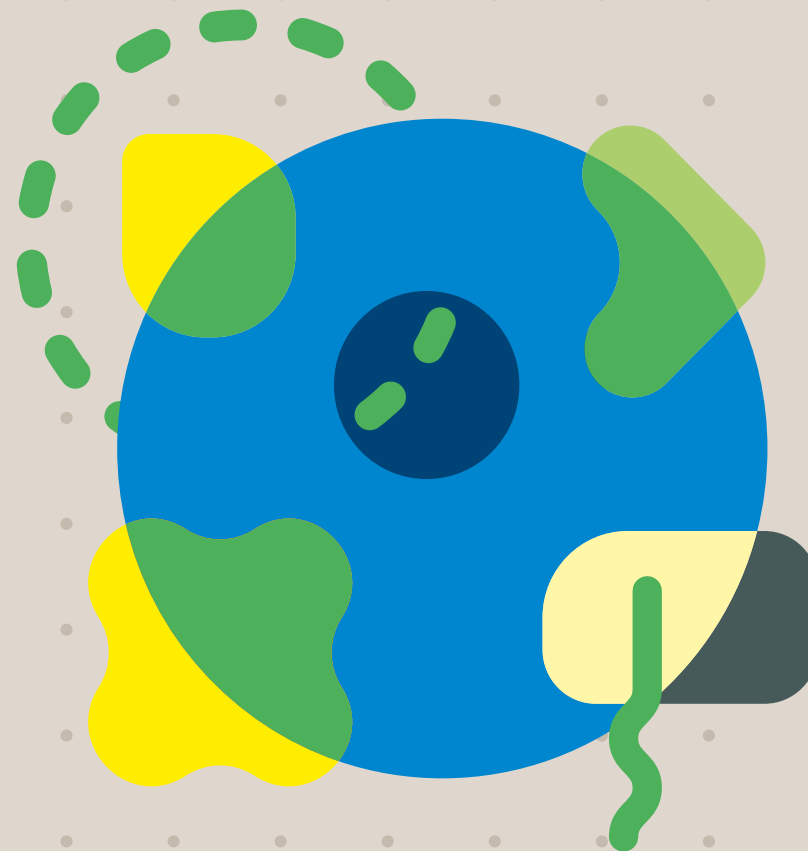
TipOne® racks and sterile refills are sold in boxes made from 100% recycled content.

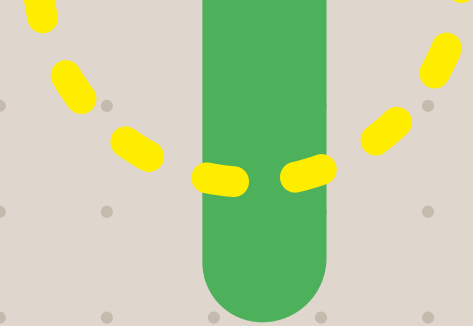
BULK BUY / SMART CASE QUANTITIES

All TipOne® products are available by the case so you can **reduce deliveries** and the resources needed for repacking your order. Our TipOne® case sizes have been carefully planned to allow maximum shipping volume per pallet.

SPACE SAVING

The TipOne® refill systems save on space as well as plastic. This means more product can be shipped in the same space, resulting in less packaging materials being used, and less emissions from transportation.





● REDUCES SINGLE-USE PLASTIC

TipOne® refills significantly reduce volume of single-use plastic in your lab. The sterile refill uses up to **63%** less plastic for its manufacture compared to sterile racked product.

● REUSE OF PLASTIC

TipOne® racks are designed to be **reused** again and again with the refills. Tests reveal they can withstand at least **100** autoclave cycles. Save plastic waste by reusing your racks with the refills.

● UPCYCLE YOUR RACKS

TipOne® racks are not just for reuse with the refills, they can be reused for many other things in the lab. Our sturdy, stackable racks make excellent storage boxes for small items like tubes or caps or labels, or can be used as a handy vessel for autoclaving small lab items. The ideas for reuse are endless!

● EASY TO RECYCLE

All components of the TipOne® system, with the exception of the bag for loose tips (made from recyclable HDPE) are made from pure polypropylene (PP) for easy recycling, where no separation of materials is required. There are no labels on the products to contaminate the **recycling** either! Contact your local Starlab office for info on how best to recycle TipOne® in your area.



Starlab International GmbH

Neuer Hölftigbaum 38
22143 Hamburg
Germany

T: +49 (0)40 675 99 39 0
F: +49 (0)40 675 99 39 20
info@starlab.de
www.starlabgroup.com

Starlab GmbH

Neuer Hölftigbaum 38
22143 Hamburg
Germany

T: +49 (0)40 675 99 39 0
F: +49 (0)40 675 99 39 20
info@starlab.de
www.starlab.de

Starlab (UK), Ltd

5 Tanners Drive
Milton Keynes MK14 5BU
United Kingdom

T: +44 (0)1908 283800
F: +44 (0)1908 283802
infoline@starlab.co.uk
www.starlab.co.uk

Starlab FRANCE SARL

30 Rue Jean Rostand
91400 Orsay
France

T: +33 (0)1 60 13 71 70
F: +33 (0)1 69 41 48 65
info@starlab.fr
www.starlab.fr

Starlab S.r.l.

Via Pinturicchio 1
20133 Milano
Italy

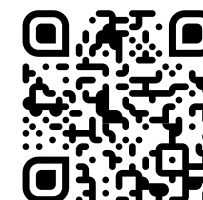
T: +39 (0)2 7020 1040
F: +39 (0)2 7020 1033
info@starlab.it
www.starlab.it



**THE UNIVERSAL PIPETTE TIP SYSTEM:
ONE SYSTEM, ONE SOLUTION**

TipOne® is a plastic-saving, eco-friendly pipette tip system that is designed to be reusable, refillable and recyclable. All TipOne® tips are manufactured from pure, virgin polypropylene to ensure the highest quality product.

TipOne® tips are engineered for compatibility with all popular brands of pipettes, thus providing your laboratory with a one system solution for all your pipetting needs.



**Scan QR code for more
information & ordering**